



GeniJet™ Cleaning Procedure

1. Gently turn the cover counter clockwise to remove it.
2. Use anti-bacterial soap or a solution of 3% hydrogen peroxide to wipe the inner chamber. **DO NOT** use chlorine or chlorinated products (such as diluted bleach) as this will damage the plastics and **VOID** your warranty.
3. Clean air supply line by gently sliding a “q-tip” (dipped in 3% hydrogen peroxide) into the air canal.
4. Replace the cap by gently turning it clockwise until snug (no need to over-tighten)

Dimensions:



Specifications:

Model: GeniJet™ Motor: 1.2A @ 120 VAC; 60 Hz; 55 W (GFI Receptacle)
0.1HP @ 3600HP magnetically coupled motor

Pump: Dual jet with adjustable airflow
White premium grade ABS house with removable jet cap

Mounting: Single 3.50” hole
Auto tightening mounting screw



FOR STANDARD WHIRLPOOL SYSTEM USERS ONLY

Maintenance

Keep the screen of the suction inlet free of debris, any blockage of the screen reduces the whirlpool action and may cause damage to the whirlpool pump motor.

Cleaning/ Flushing the inner whirlpool system

Fill up with warm water up to proper level.

Apply 3 tsp of low foaming dish washing detergent, 1 tsp of the regular bleach into the tub.

Start the whirlpool for 5 min and let it still for 5 min and run again for two minutes.

Drain out the water and fill up again with warm water.

Let it run for 5 minutes

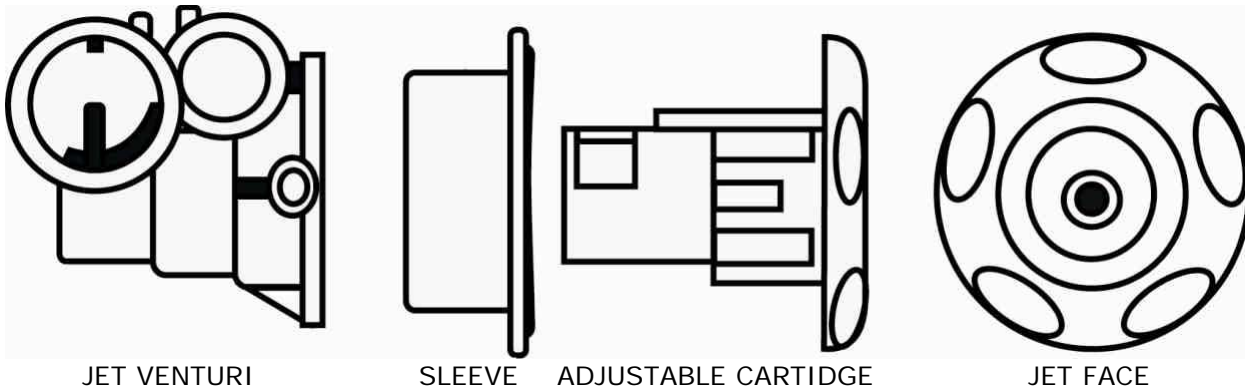
Drain out the water.

Wipe dry with soft cloth.

Warning

DO NOT use if you are diabetic, have poor blood circulation, or if any area of your feet or leg is inflamed or has open wound/s. Please consult your physician before using, if you have any kind of fungal infection/s, swelling, fracture or persistent pain.

Assembly of the jet and maintenance



Assembly

- 1) With jet VENTURI and jet body in position, insert the cartridge into the body and lightly press the jet face until the face clicks into the position.
- 2) Use finger to rotate the eyeball into position. If the assembly is seated, the eyeball will stay in the correct position.

Disassembly

Press the eyeball inwards with your thumb. The eyeball will move freely when spring is compressed. Using the fingers, grasp the edge of the jet and pry the face the body. It will snap out and clean thoroughly, in jet, body, and cartridge for good maintenance as well as prevention from build up.

CAUTION

To reduce the potential risk of fire, electrical shock, or injury to persons:

- 1) All electrical wiring (both installation & repair) must be done by a licensed electrician and in accordance with local and state ordinances.
- 2) No modifications, additions or deletions should be made to the pump, without factory approval.
- 3) Before starting motor, fill tub with water to level recommended by whirlpool manufacturer. Never run pump dry!
- 4) Motors have a built-in automatic reset over load protector that guards against damage from mechanical or electrical problems such as low voltage, locked pump or similar abnormal conditions. Remember, if the timer device is still on, these motors will restart automatically - as soon as they cool down.
- 5) Do not relocate pump without prior approval from factory.

WARNING

-- To reduce the risk of injury, do not permit children to use this product unless they are closely supervised at all times.

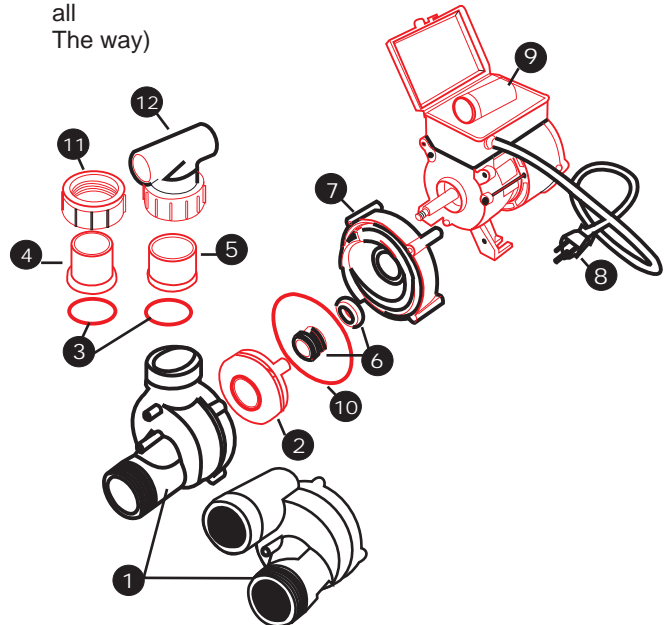
-- To reduce the risk of electric shock, replace damage cord immediately. And Do not use extension cord to connect unit to electric supply.; provide a properly located outlet.

TROUBLE SHOOTING GUIDE

SYMPTOMS	PROBABLE CAUSES	RECOMMENDED ACTION
Pump will not turn on	No power to motor	Check switch and fuse or breaker, also connection from motor To switch.
Pump runs slow.	Pump not wired same as voltage supplied	Check pump to correct voltage.
Pump Humms.	Something stuck in impeller.	Take pump apart and clean impeller(as shown below).
Pump Humms but Will not turn.	Wire not tight.. Pump jammed.	Check terminals. Remove dust cap and rotate motor shaft with screwdriver. If unable to turn, send in for repair.
Noisy pump	Something in the pump.	Take pump apart and remove debris.
Pump leaks.	Bad bearing. Hose clamps or union loose. Bolts holding tank loose. Leak around shaft from worn seal. Pump creeps.	Replace Bearing. Tighten. Tighten Replace shaft seal. Secure pump to floor.
Pump cavitates.	Air from jets getting in suction	Direct directional flow fitting away from suction fitting.
Pump runs but No jet action.	Air lock.	Turn pump on, wait 10 seconds. Turn pump off. Repeat up to 10 times. If airlock is not cure, try turn tee union #12) as shown in clock-wise and tighten back.(Do not turn all the way)

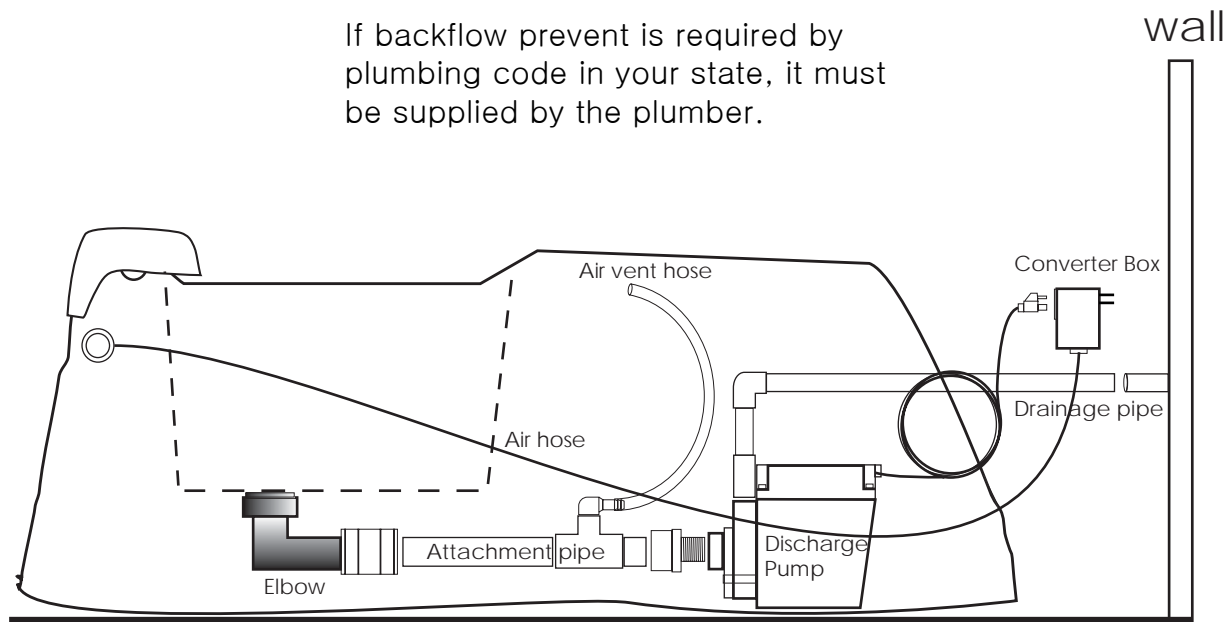
PUMP PARTS LIST

ITEM	PARTS#	DESCRIPTION
1	WWVF	FRONT VOLUTE
2	WWIMP	IMPELLER
3	UPUFO/R	UNION O RING
4	UPUFM	UNION MALE 1 1/2"
5	UPUFF	UNION FEMALE 1 1/2"
6	PPSSFSEAL	SEAL ASSEMBLY
7	PPWWVB	VOLUTE BACK
8	PPWWCORD	POWER CORD
9	MPASHU506	AIR SWITCH
10	PPWWVO/R	VOLUTE O RING
10	UPUFNUT	UNION NUT 1 1/2"
12	UNUTEE	UNION TEE 1 1/2 X 1 X 1"



Discharge Pump Installation (optional)

If backflow prevent is required by plumbing code in your state, it must be supplied by the plumber.



FAQ

1) Pump hums but does not drain the water out

-Air Lock: Piping elevation must be above discharge pump outlet so that air can be released

-Turn pump on, wait 5 seconds, turn pump off. Repeat 10 times. If the air is not released, detach attachment pipe and re-attach

Quick Tip: Use a plunger to release the air lock

2) Pump does not turn on

-Check the power source

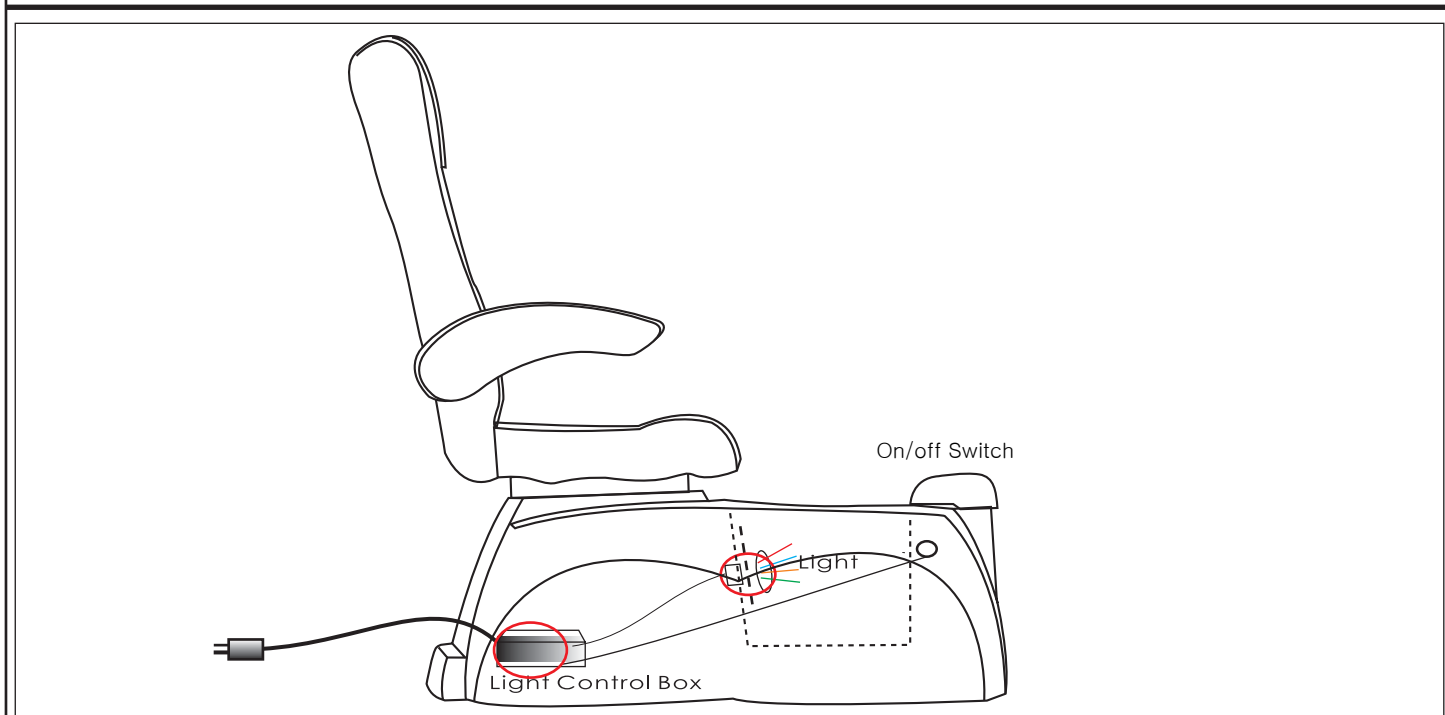
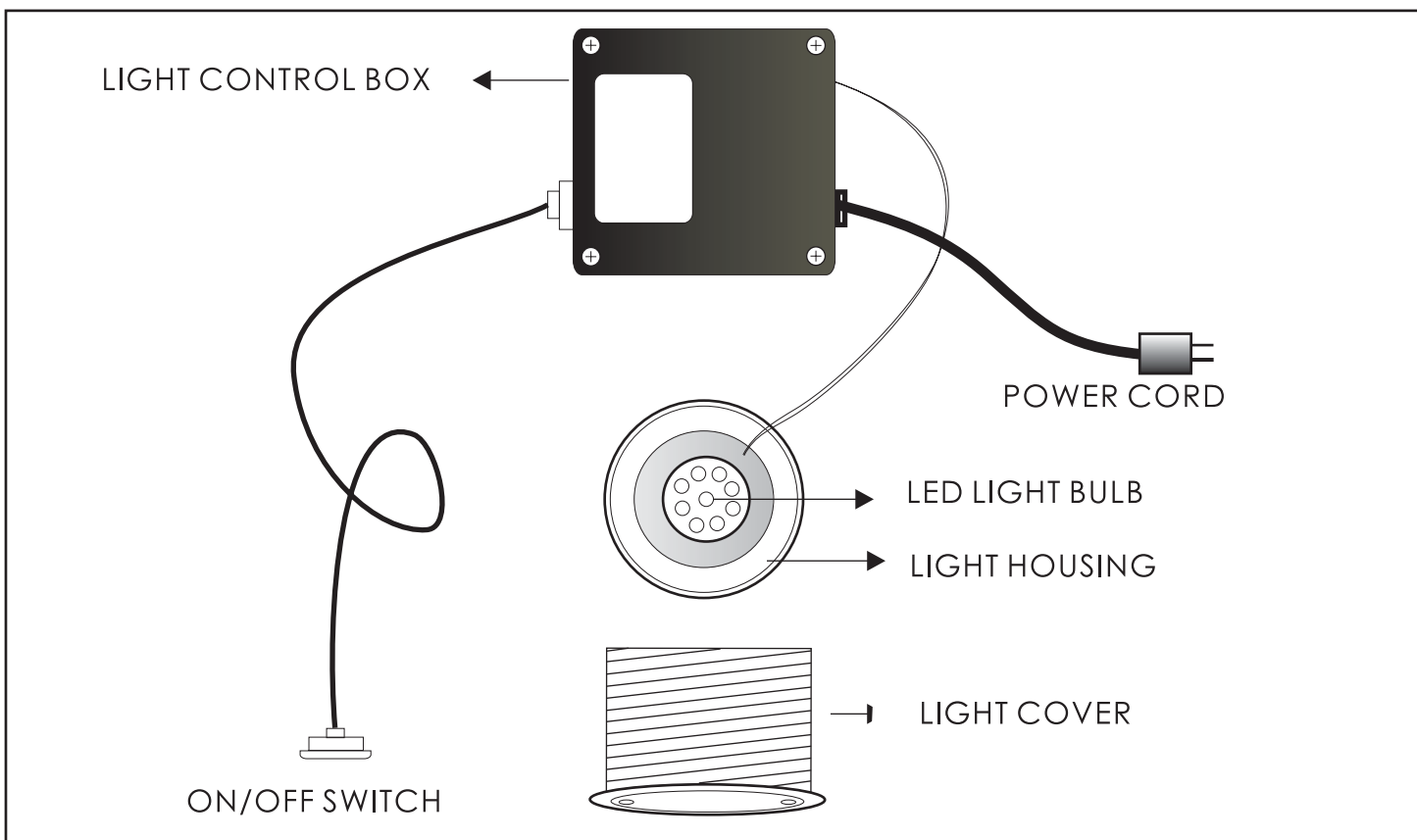
-Check if the air tubing is properly attached from the switch to the converter box

-Check attachment pipes throughly debris

3) Noise when turn on

-Foreign object may be lodged - Disassemble and remove debris or particles

Light System



When light is not turning on:

- 1) Please check the "Power Cord" from the light control box
 - Make sure the power cord is connected to your electric source and check your surge protector
- 2) Please check your "Electric Source"
 - If your power cord is connected through the surge protector, please make sure your surge protector is on
- 3) Please check your "Light Bulb"
 - Gently re-insert the light bulb

Disinfecting Your Pedicure Spa

Note: Please be advised that it is responsibility of purchaser/user to adhere strictly to the following procedure. Any noncompliance will be considered negligence of the purchaser/user.

The Bureau of Barbering and Cosmetology requires that salons using whirlpool pedicure spas use the following disinfecting procedures to ensure proper cleaning and maintenance of the equipment, and to prevent bacterial infection.

After Each Customer:

1. Drain all water and remove all debris from the footspa.
2. Clean the surfaces and walls of the footspa with soap or detergent and rinse with clean, clear water.
3. Disinfect with an EPA-registered disinfectant with bactericidal, fungicidal, and virucidal activity.
4. Wipe dry with clean towel.

At The End of Each Day:

1. Remove the intake suction screen. All debris trapped behind the screen of each footspa shall be removed, and the screen and the inlet shall be washed with soap or detergent and water.
2. Before replacing the screen, totally immerse the screen in an EPA-registered disinfectant with bactericidal, fungicidal, and virucidal activity.
3. Finally, flush the whirlpool system with low-sudsing detergent and warm OR an EPA-registered cleaner for 10 minutes. Rinse with clean, clear water and drain.

Every Other Week:

1. After following the outlined required cleaning procedures for the end of each day, fill the basin with warm water and 1 teaspoon of 5.25% bleach for each one gallon of water.
2. Circulate the solution through the whirlpool system for 5 to 10 minutes.
3. Let the solution sit overnight (at least 6-10 hour).
4. The following morning (before the first customer) drain and flush the system with water.

USER RECOMMENDATION

PLEASE READ THE MANUAL THOROUGHLY BEFORE USE TO ENSURE CORRECT OPERATION.

THOSE UNDER A DOCTOR'S CARE OR WHO ARE EXPERIENCING ONE OR MORE OF THE FOLLOWING CONDITIONS SHOULD CONSULT THEIR DOCTOR BEFORE USE.

- You are receiving medical treatment or are feeling ill.
- Your body shows any acute symptoms.
- You have heart disease.
- You are pregnant or having a menstrual period.
- Your doctor has ordered you to rest.
- You have a back disorder resulting from an accident or disease.
- You have a high fever.
- You have sensory disorders.
- You have medical electrical device (e.g. pacemaker).
- You have service interruption in the circulation of the legs.
- You are diabetic.

FAILURE TO DO SO MAY RESULT IN ACCIDENTS AND HEALTH PROBLEMS.



Plumbing Accessories

[See General Information for Plumbing Accessories](#)

J & A USA INC
200 RODEO DR
EDGEWOOD, NY 11717 USA

E242637

Whirlpool pedicure spas, Models PS300, PS650LX, Episode, Episode-S Type, Toepia EM, Cleo, Petra.

[Last Updated](#) on 2004-10-19

This page and all contents are Copyright © 2005 by Underwriters Laboratories Inc.®

The appearance of a company's name or product in this database does not in itself assure that products so identified have been manufactured under UL's Follow-Up Service. Only those products bearing the UL Mark should be considered to be Listed and covered under UL's Follow-Up Service. Always look for the Mark on the product.

UL permits the reproduction of the material contained in the Online Certification Directory subject to the following conditions: 1. The Guide Information, Designs and/or Listings (files) must be presented in their entirety and in a non-misleading manner, without any manipulation of the data (or drawings). 2. The statement "Reprinted from the Online Certifications Directory with permission from Underwriters Laboratories Inc." must appear adjacent to the extracted material. In addition, the reprinted material must include a copyright notice in the following format: "Copyright © 2005 Underwriters Laboratories Inc.®"

An independent organization working for a safer world with integrity, precision and knowledge.





Back Flow Prevention Device (Dual Check Valve)

May 1, 2007

In accordance with applicable Local or State regulations, J&A USA, Inc., the manufacturer of the pedicure whirlpool spa certifies that the following models are equipped with factory installed Dual Check Valve Back Flow Preventor:

- ▶ Cleo
- ▶ Episode Series
- ▶ Pacific Series
- ▶ Petra Series
- ▶ Toepia Series

The specification of the installed device is as follows:

DEVICE NAME	DUAL CHECK VALVE BACKFLOW PREVENTOR
DEVICE MANUFACTURER	WATTS REGULATOR COMPANY NORTH ANDOVER, MA
DEVICE MODEL	WATTS 3/8 7, 7C AND 3/4 H7,H7C
DEVICE SPECIFICATION	TESTED AND CERTIFIED TO MEET ANSI/ASSE STANDARD 1024 & 1032 CSA CERTIFIED TO STANDARD NO.B64.6
DEVICE PRESSURE	MAXIMUM PRESSURE: 150PSI (10BAR) MINIMUM PRESSURE: 10PSI (69KPA) MAXIMUM RECOMMENDED FLOW: 10GPM
DEVICE TEMPERATURE	WORKING TEMPERATURE: 33F~144F CONSISTENT; INTERMITTENT TO 180F

All models of pedicure spa mentioned above are equipped with the subject device as standard feature, sold and/or shipped to the following states:

- ▶ Effective April 01, 2005:
**ARIZONA, CALIFORNIA, NEBRASKA, NEVADA, OREGON,
TEXAS AND WASHINGTON**
- ▶ Effective June 15, 2005
ILLINOIS, MINNESOTA, WISCONSIN, MICHIGAN
- ▶ Effective May 1, 2007
CONNECTICUT

For additional information, please contact us at 631-243-3336 extension 108.

Very Truly Yours,

Peter Kim
Manager of Technical Support

J&A USA, Inc.
200 Rodeo Drive
Edgewood, NY 11717
Tel: 631-243-3336
Fax: 631-243-3339
www.jausainc.com

J&A USA, INC. LIMITED WARRANTY STATEMENT

J&A Product: EPISODE, PETRA, TOEPIA, CLEO, PACIFIC SPA

J&A Accessories: Epi-Stool, Tri-Stool, _____

Duration of limited warranty: 1 year from date of purchase

Coverage on limited warranty: Parts & Labor

EXTENT OF LIMITED WARRANTY

J&A USA warrants that the J&A product and/or accessories specified above will be free from defects in materials and workmanship for the duration specified above. Which duration begins on the date of purchase by the customer (salon, spa). Customer is responsible for maintaining proof of date of purchase and manual booklet in order to initiate the warranty, the customer must send J&A Warranty Card in the manual booklet. Read carefully and return to J&A within 15 days from the date of purchase.

If J&A receives notice of a defective product during the applicable warranty period, J&A shall either repair or replace the defective parts at J&A's option. Replacement product may be either new or equivalent in performance to new. If J&A is unable to repair or replace, as applicable, a defective product covered by the J&A's warranty, J&A shall, within a reasonable time after being notified of the defect, replacement of equivalent purchased price for J&A product, accessories, or supplies. J&A shall have no obligation to repair, replace, or refund until the verification process by J&A is completed. J&A's limited warranty is valid in US where the covered J&A product is distributed by J&A. additional warranty services, may be available from any authorized J&A service facility where the product is distributed by J&A or by an authorized importer.

J&A's limited warranty cover only those defects which arise as a result of normal use of the product, and do not apply to any:

- Improper or inadequate maintenance or modification
- Unauthorized modification or misuse
- Improper site preparation or maintenance

Any applicable warranty shall not apply to J&A that have been improper installation or plumbing, remanufactured, refurbished, misused or tampered with in any way.

LIMITATION OF WARRANTY

TO THE EXTENT ALLOWED BY LOCAL LAW, NEITHER J&A NOR ITS THIRD PARTY SUPPLIERS MAKE ANY OTHER WARRANTY OR CONDITION OF ANY KIND, WHETHER EXPRESS OR IMPLIED, WITH RESPECT TO THE J&A PRODUCTS, AND SPECIFICALLY DISCLAIM THE IMPLIED WARRANTIES OR CONDITIONS OF MERCHANTABILITY, SATISFACTORY QUALITY, AND FITNESS FOR A PARTICULAR PURPOSE. Some states or providences do not allow limitations on the duration of an implied warranty, so the above limitation or exclusion might not apply to you. This warranty gives you specific legal rights that vary from state to state, or providence to providence.

LIMITATION OF LIABILITY

To the extent allowed by the local law, remedies provided in this warranty statement are the customer's sole and exclusive remedies.

TO THE EXTENT ALLOWED BY LOCAL LAW, EXCEPT FOR THE OBLIGATIONS SPECIFICALLY SET FORTH IN THIS WARRANTY STATEMENT, IN NO EVENT WILL J&A OR ITS THIRD PARTY SUPPLIERS BE LIABLE FOR DIRECT, INDIRECT, SPECIAL, INCIDENTAL, OR CONSEQUENTIAL (INCLUDING LOST PROFIT) DAMAGES, WHETHER BASED ON CONTRACT, TORT, OR ANY OTHER LEGAL THEORY AND WHETHER ADVISED OF THE POSSIBILITY OF SUCH DAMAGES.

OBTAINING TECHNICAL SUPPORT

Please, look for help in the following order:

- 1) See Trouble Shooting Guide located in the Manual
- 2) E-mail us; detailed description of your problem, if you have an internet access
- 3) Fax us ; detailed description of you problem, if you have a fax machine
- 4) Contact your local distributor and request an A/S report to be filed on your behalf
- 5) Contact J&A tech support by phone

Please have the following information ready:

- 1) Salon or Spa Name, Address, Telephone Number
- 2) Contact Name
- 3) Model Name, Serial number of the problem unit
- 4) Brief Description of the problem

J&A USA, INC

200 RODEO DRIVE, EDGEWOOD, NY 11717 PHONE: (631)243-3336 FAX: (631)243-3339

WEBSITE: WWW.JAUSAINC.COM

EMAIL: INFO@JAUSAINC.COM